



#### Contact SAMSUNG WORLD WIDE

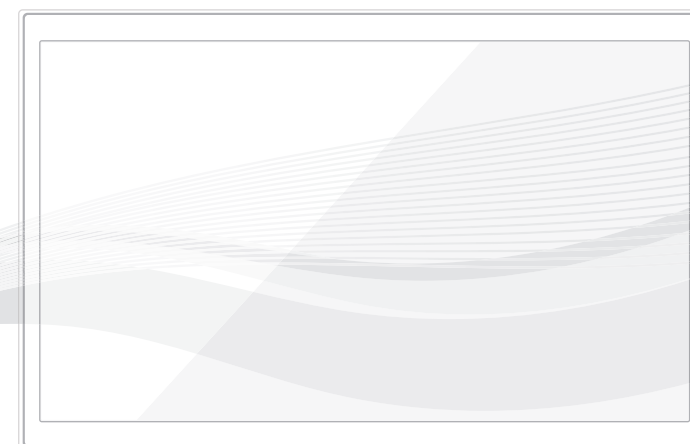
If you have any questions or comments relating to Samsung products, please contact the SAMSUNG customer care centre.

Country	Customer Care Centre ☎	Web Site
AUSTRALIA	1300 362 603	www.samsung.com
NEW ZEALAND	0800 SAMSUNG (0800 726 786)	www.samsung.com
CHINA	400-810-5858	www.samsung.com
HONG KONG	(852) 3698 4698	www.samsung.com/hk (Chinese) www.samsung.com/hk_en (English)
INDIA	1800 3000 8282 1800 266 8282	www.samsung.com/in
INDONESIA	0800-112-8888 021-5699-7777	www.samsung.com/id
JAPAN	0120-327-527	www.samsung.com
MALAYSIA	1800-88-9999	www.samsung.com/my
PHILIPPINES	1-800-10-SAMSUNG(726-7864) for PLDT 1-800-3-SAMSUNG(726-7864) for Digitel 1-800-8-SAMSUNG(726-7864) for Globe 02-5805777	www.samsung.com/ph
SINGAPORE	1800-SAMSUNG(726-7864)	www.samsung.com
THAILAND	1800-29-3232 02-689-3232	www.samsung.com/th
TAIWAN	0800-329-999 0266-026-066	www.samsung.com/th
VIETNAM	1 800 588 889	www.samsung.com
GEORGIA	0-800-555-555	www.samsung.com
ARMENIA	0-800-05-555	www.samsung.com
AZERBAIJAN	088-55-55-555	www.samsung.com
UZBEKISTAN	8-10-800-500-55-500	www.samsung.com
KYRGYZSTAN	00-800-500-55-500	www.samsung.com
TADJIKISTAN	8-10-800-500-55-500	www.samsung.com
MONGOLIA	+7-800-555-55-55	www.samsung.com
BELARUS	810-800-500-55-500	www.samsung.com
MOLDOVA	0-800-614-40	www.samsung.com



# Plasma TV

## user manual



Thank you for purchasing this Samsung product.  
To receive more complete service, please register  
your product at

[www.samsung.com/register](http://www.samsung.com/register)

Model \_\_\_\_\_ Serial No. \_\_\_\_\_



BN68-04813A-02

# Important Safety Instructions

**SAMSUNG**

## Warning! Important Safety Instructions

(Please read the appropriate section that corresponds to the marking on your Samsung product before attempting to install the product.)

### CAUTION

#### RISK OF ELECTRIC SHOCK DO NOT OPEN

CAUTION: TO REDUCE THE RISK OF ELECTRIC SHOCK, DO NOT REMOVE COVER (OR BACK). THERE ARE NO USER SERVICEABLE PARTS INSIDE. REFER ALL SERVICING TO QUALIFIED PERSONNEL.



This symbol indicates that high voltage is present inside. It is dangerous to make any kind of contact with any internal part of this product.



This symbol alerts you that important literature concerning operation and maintenance has been included with this product.

- The slots and openings in the cabinet and in the back or bottom are provided for necessary ventilation. To ensure reliable operation of this apparatus, and to protect it from overheating, these slots and openings must never be blocked or covered.
  - Do not cover this apparatus in a confined space, such as a bookcase, or built-in cabinet, unless proper ventilation is provided.
  - Do not place this apparatus near or over a radiator or heat resistor, or where it is exposed to direct sunlight.
  - Do not place a water containing vessel(vases etc.) on this apparatus, as this can result in a risk of fire or electric shock.
- Do not expose this apparatus to rain or place it near water(near a bathtub, washbowl, kitchen sink, or laundry tub, in a wet basement, or near a swimming pool etc.). If this apparatus accidentally gets wet, unplug it and contact an authorized dealer immediately. Make sure to pull out the power cord from the outlet before cleaning.
- This apparatus use batteries. In your community there might be regulations that require you to dispose of these batteries properly under environmental considerations. Please contact your local authorities for disposal or recycling information.
- Do not overload wall outlets, extension cords or adaptors beyond their capacity, since this can result in fire or electric shock.
- Power-supply cords should be routed so that they are not likely to be walked on or pinched by items placed upon or against them, paying particular attention to cords at plug end, adaptors and the point where they exit from the appliance.
- To protect this apparatus from a lightning storm, or when it is left unattended and unused for long periods of time, unplug it from the wall outlet and disconnect the antenna or cable system. This will prevent damage to the set due to lightning and power line surges.
- Before connecting the AC power cord to the DC adaptor outlet, make sure the voltage designation of the DC adaptor corresponds to the local electrical supply.
- Never insert anything metallic into the open parts of this apparatus. Doing so may create a danger of electric shock.
- To avoid electric shock, never touch the inside of this apparatus. Only a qualified technician should open this apparatus.
- Make sure to plug the power cord in until it is firmly inserted. When removing the power cord, make sure to hold the power plug when pulling the plug from the outlet. Do not touch the power cord with wet hands.
- If this apparatus does not operate normally - in particular, if there are any unusual sounds or smells coming from it - unplug it immediately and contact an authorized dealer or service centre.
- Be sure to pull the power plug out of the outlet if the TV is to remain unused or if you are to leave the house for an extended period of time (especially when children, elderly or disabled people will be left alone in the house).
  - Accumulated dust can cause an electric shock, an electric leakage or a fire by causing the power cord to generate sparks and heat or the insulation to deteriorate.
- Be sure to contact an authorized service centre, when installing your set in a location with heavy dust, high or low temperatures, high humidity, chemical substances and where it operates for 24 hours such as the aerial port, the train station etc.
- Failure to do so may cause serious damage to your set.
- Use only a properly grounded plug and receptacle.
  - An improper ground may cause electric shock or equipment damage. (Class I Equipment only.)
- To disconnect the apparatus from the mains, the plug must be pulled out from the mains socket, therefore the mains plug shall be readily operable.
- Do not allow children to hang onto the product.
- Store the accessories (battery, etc.) in a location safely out of the reach of children.
- Do not install the product in an unstable location such as a shaky self, a slanted floor or a location exposed to vibration.
- Do not drop or impart any shock to the product. If the product is damaged, disconnect the power cord and contact a service centre.
- Unplug the power cord from the power outlet and wipe the product using a soft, dry cloth. Do not use any chemicals such as wax, benzene, alcohol, thinners, insecticide, aerial freshener, lubricant or detergent. This may damage the appearance or erase the printing on the product.
- Apparatus shall not be exposed to dripping or splashing.
- Do not dispose of batteries in a fire.
- Do not short circuit, disassemble or overheat the batteries.
- Danger of explosion if battery is incorrectly replaced. Replace only with the same or equivalent type.
- **WARNING - TO PREVENT THE SPREAD OF FIRE, KEEP CANDLES OR OTHER OPEN FLAMES AWAY FROM THIS PRODUCT AT ALL TIMES.**



---

# Contents

## Basic Features

- 6 Using the Smart Touch Control
  - 7 Connecting to the TV
  - 7 Inserting the Batteries (AAA X 2)
  - 8 Touchpad
  - 8 Show Status and Notification Banner
  - 8 History
  - 8 Deleting History Data
  - 8 Searching
  - 9 Adjusting the Touchpad
- 10 Turning on the TV
- 10 Built-in TV Camera
  - 11 Extending the TV Camera
  - 11 Retracting the Camera
- 12 Universal Remote Setup
  - 12 Add the External Device
- 13 SETUP
- 13 Switching Between Video Sources
- 14 The Evolution Kit Slot (Kit Sold Separately)
- 14 Viewing the e-Manual
  - 14 Scrolling a Page
  - 15 Using the Top Icons
  - 15 Returning to the Home Page
  - 15 Searching the Index
  - 15 Searching Pages
  - 15 Closing the e-Manual
  - 15 Jumping to a Menu Item
  - 15 Updating the e-Manual

## Network Configuration

- 16 Connecting to a Network
  - 16 Network Connection - Wireless
  - 16 Wireless Network Precautions
  - 16 Network Security Protocols
  - 17 Network Connection - Wired

## 3D Basics

- 18 3D Active Glasses
  - 18 Pairing 3D Active Glasses
  - 20 Watching 3D Video

## Troubleshooting and Other Information

- 21 What is Remote Support?
- 22 Troubleshooting
- 22 Mounting the TV on the Wall Using the Wall Mount Kit (Optional)
- 24 Storage and Maintenance
- 24 Providing Proper Ventilation for Your TV
- 25 Eco Sensor and Screen Brightness
- 26 Tip Prevention – Securing the TV to the Wall

## Specifications

- 27 Specifications - TV
- 28 Licences


Figures and illustrations in this User Manual are provided for reference only and may differ from the actual product appearance. Product design and specifications may change without notice.

## Features for your new TV

- **3D:** This new feature enables you to view 3D content.

- **SMART HUB:**

This TV features Smart Hub, a multi-purpose entertainment and family centre. With Smart Hub, users can surf the web, download applications, and stay in touch with family and friends through social networking services. In addition, you can enjoy photo, video, and music files stored on external storage devices.

Press  button to launch Smart Hub. Choose a service using the icons displayed in the top part of the screen.

**Social:** Watch the latest YouTube videos and you and your friends' video posts on Facebook and Twitter. You can also make video calls to friends by the TV camera.

**Apps:** Samsung Apps offers an extensive collection of free and paid news, sports, weather, and gaming content you can directly download to and enjoy on your TV.

**Photos, Videos & Music:** Play back photo, video, and music files from an external storage device.

- **Anynet+ (HDMI-CEC):** This allows you to control all connected Samsung devices that support Anynet+ with your Samsung TV's remote.
- **e-Manual:** Provides a detailed, on-screen user's manual built into your TV.
- **SMART Interaction:** Using this function, you can access and control menu options and functions using motions.
- **Device Manager:** Use the TV features with a USB or Bluetooth keyboard and mouse.
- **MHL & Screen Mirroring:** Displays mobile device screens on your TV using a wired or wireless connection.

For India only



This marking on the product, accessories or literature indicates that the product and its electronic accessories should not be disposed of with other household waste at the end of their working life. To prevent possible harm to the environment or human health from uncontrolled waste disposal, please separate these items from other types of waste and recycle them responsibly to promote the sustainable reuse of material resources.

For more information on safe disposal and recycling visit our website [www.samsung.com/in](http://www.samsung.com/in) or contact our Helpline numbers - 18002668282, 180030008282.

# Accessories

- ✎ Please make sure the following items are included with your TV. If any items are missing, contact your dealer.
- ✎ The items' colours and shapes may vary depending on the models.
- ✎ Cables not included in the package contents can be purchased separately.
- ✎ Check that there is no accessory hidden behind packing materials when you open the box.

- Smart Touch Control & Batteries (AAA x 2)
- User Manual
- Samsung 3D Active Glasses
- Cleaning-Cloth
- Power Cord
- Regulatory Guide
- Warranty Card (Not available in some locations)



Component adapter



AV Adapter



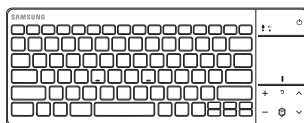
Holder-Wire stand



IR Extender Cable

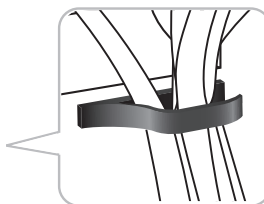
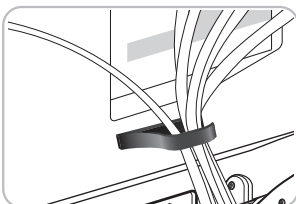
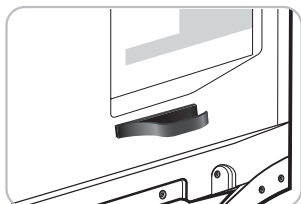


Blanking Bracket

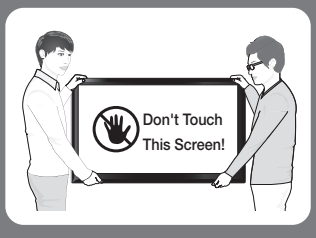


Wireless Keyboard (Sold Separately)

## Assembling the Holder-Wire stand




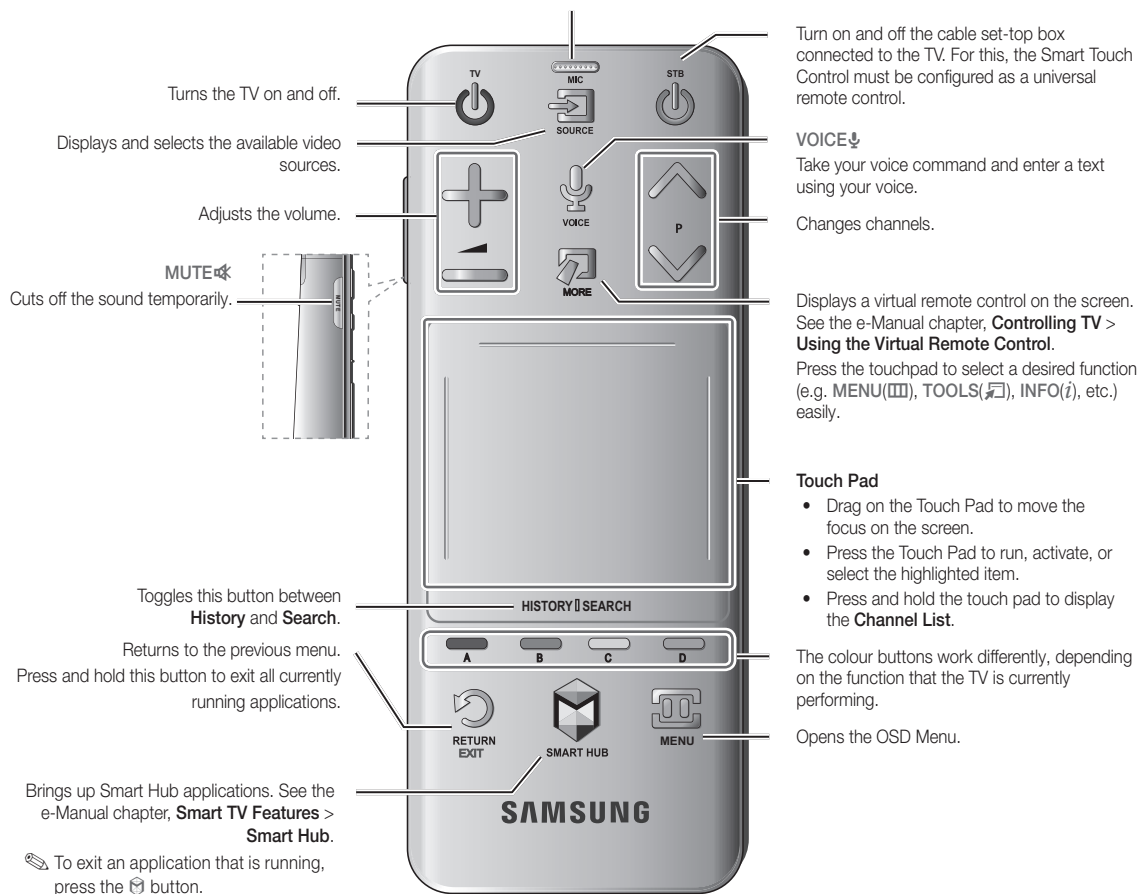
**Warning:** Screens can be damaged from direct pressure when handled incorrectly. We recommend lifting the TV by the edges, as shown.



# Using the Smart Touch Control

You can use the MIC to give **Voice Recognition** commands. Simply press the VOICE button.

 **Voice Recognition** function can be affected by unclear pronunciation, voice level, or surrounding noise.



## Connecting to the TV

In order to operate the TV using a Smart Touch Control, you must first pair it to the TV via Bluetooth.

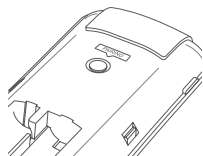
However, the Smart Touch Control is only available for the paired Samsung TV.

1. When the TV is off, point the Smart Touch Control at the remote control receiver of the TV and press the TV button for the first pairing. Only this button sends an IR signal.
2. A Bluetooth icon will appear at the bottom left of the screen as shown below. The TV will then attempt to connect to the Smart Touch Control unit automatically.



<Attempting to connect and completion icons>

## Reconnecting the Smart Touch Control



<The Smart Touch Control pairing button>

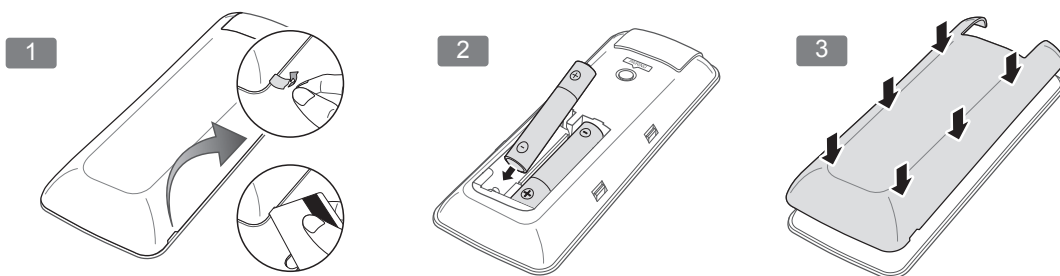
If you need to reestablish the connection between the TV and the Smart Touch Control, press the pairing button at the back of the Smart Touch Control. The pairing button can be accessed by removing the Smart Touch Control's battery cover. Pressing the pairing button automatically reestablishes the connection between the control and the TV.

## Low Battery Power Warning



If the battery becomes and blanks low while using the Smart Touch Control, the following alarm window blinks and appears at the bottom left of the screen. Use alkaline batteries for longer usage.



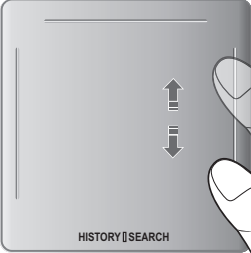

## Inserting the Batteries (AAA X 2)



1. Slightly lift the battery cover by pulling the strap or using a plastic card. Next, pull on the cover's notch with a fingernail to remove the cover completely.
2. Insert 2 AAA batteries, making sure to align the positive and negative ends correctly.
3. Align the battery cover with the back of the remote control and press down along the edges until it is clearly attached to the remote control.

# Touchpad

Use the touchpad to perform various commands. Navigate to **Tutorial (System > Device Manager > Smart Touch Control Settings > Tutorial)** to view an on-screen guide to using the Smart Touch Control.

Dragging	Press
	
Drag on the touchpad in the desired direction. Move the focus or the pointer in the direction the finger is dragging.	Press the touchpad. This selects the focused item.
Scrolling Up and Down	Scrolling Left and Right
	
Slide a finger along the raised line on either side of the Touch Pad to scroll up or down in a list or webpage. The line on the left side is designed for left-handed users.	Move your finger horizontally on the projected line at the top of the touchpad. You can horizontally scroll a horizontal list or the Smart Hub panel.

## Show Status and Notification Banner

Press the **MORE** button on the Smart Touch Control and then select **STATUS** on the virtual control panel to display the status and notification banner at the top of the screen.

## History

Press the **HISTORY/SEARCH** and then select **History** from the list displayed at the bottom of the screen. This displays an interactive list of recently accessed channels, media content and applications.

## Deleting History Data

You can delete the history information about recently viewed channels, content and applications.

## Searching

Press the **HISTORY/SEARCH** button. The list appears at the bottom of the screen. Press the **HISTORY/SEARCH** button again. Enter search criteria to search not only many apps and their contents on the TV but also the Web.



## Adjusting the Touchpad

Users can adjust the sensitivity of the Smart Touch Control's touchpad. Set **Touch Sensitivity** to adjust sensitivity and make it more convenient to use.

## Using the Virtual Remote Control

Press **MORE** button to display the virtual remote panel on the screen. The virtual remote panel consists of a number panel, a playback control panel, and a quick access panel. Use the touchpad to select numbers and buttons. Press and hold the **MORE** button. A quick access panel of virtual remote panel appears. You can select screen buttons easily.

### Changing the Virtual Remote Control Panel

Choose the number panel, playback control panel, or quick access panel as the panel to be shown on the screen.

Use the touchpad to keep moving the focus left or right. The panel changes when the focus is moved beyond the leftmost or rightmost edge.

Use left/right scroll function on the touchpad to change the panel easily.

### Change a position of the Virtual Remote Panel

Press the **MORE** button on the Smart Touch Control. The virtual remote panel appears on the screen.

Press and hold the touchpad for one second. Users can change a position of the virtual remote panel of the screen.

### Using the Number Panel

Use the number panel to enter numbers on a keypad screen or webpage or to change the channel while watching TV. Changing the channel using the number pad leaves a record, allowing you to easily return to previous channels.

### Using the Playback Control Panel

Use the playback control panel to pause, rewind, fast forward, skip to the next file, and much more while enjoying media content.


### Using the Quick Access Panel

Quickly access the **INFO**, **MENU** and **e-Manual** buttons. However, the availability of buttons may vary depending on the operating mode of the Smart Touch Control (with the TV only, as a universal remote, etc.).

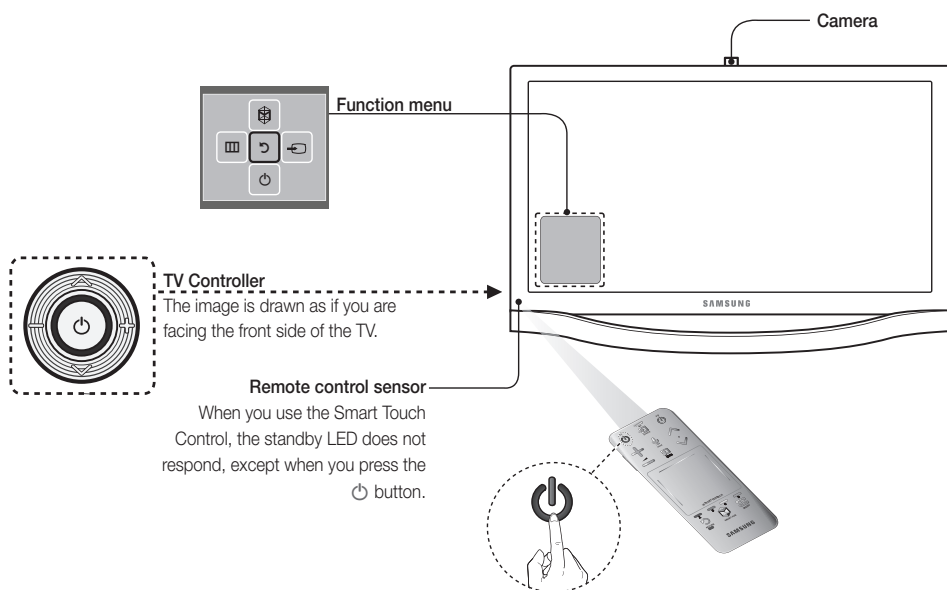
---

## Turning on the TV

Turn on the TV using the  button on the remote control or TV panel.

 The product Colour and shape may vary depending on the model.

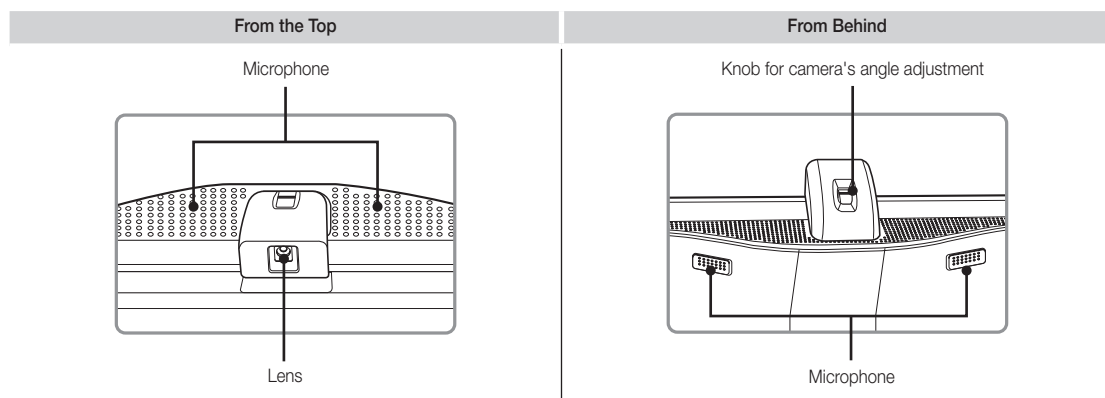
 The TV's Controller, a small joy stick like button on the rear left side of the TV, lets you control the TV without the remote control.

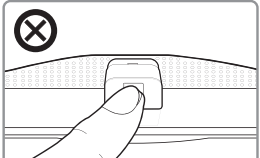

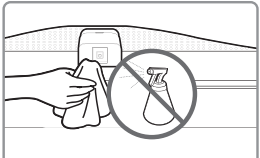



---

## Built-in TV Camera

This TV features a built-in TV camera that can be used for the Motion Control, Voice Recognition (built-in microphone), and Face Recognition features. You can also use the knob for camera's angle adjustment to change the camera's viewing angle.

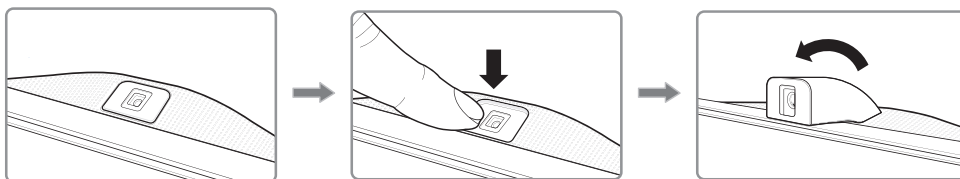


	<p> Do not touch the lens while operating the TV camera. Leave fingerprints that may affect the image quality. If the lens gets dirty, clean it using a soft piece of cloth.</p>
	<p> Keep the microphone from being clogged by dirt or dust. If it is clogged, voice commands may not be recognized. Use a soft cloth to wipe the microphone.</p>

## Extending the TV Camera

In order to use the TV camera, you must first extend it.

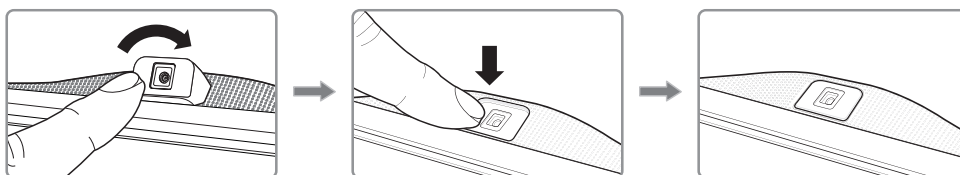
Gently push the camera in without touching the lens until you hear a click.



## Retracting the Camera

If you are not using the TV camera, keep it retracted inside the TV. The Motion Control and Face Recognition features cannot be used while the TV camera is in the retracted state, but Voice Recognition will still be available.

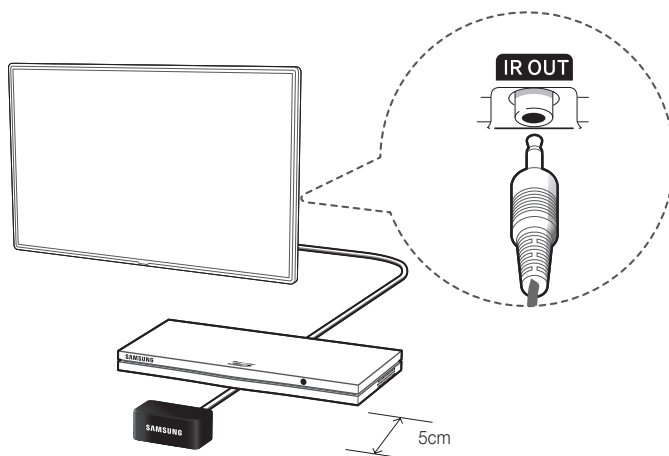
Gently push the camera in without touching the lens until you hear a click.



---

# Universal Remote Setup

This TV has a universal remote control feature that lets you control cable boxes, Blu-ray players, home theatres, and other third-party external devices connected to the TV using the TV's remote control.



Keep a distance of 5 cm at least between the IR EXTENDER CABLE and the external device, as the illustration shows. Face the IR EXTENDER CABLE toward the external device's remote control signal receiver. Note that it should be no obstacle between IR Extender and external device. The presence of an obstacle will interfere with the transmission of the remote control signal.

## Add the External Device

1. Turn on the external device you wish to set up universal remote function for and then press **SOURCE** to bring up the **Source** screen.
2. Select **Universal remote setup** from the top of the screen. This initiates the universal remote setup process.
3. Follow the on-screen instruction and set up the universal remote control. If it does not work, set up the remote control by entering the model number manually.

---

# SETUP

The initial setup dialog appears when the TV is first activated.

Follow the on-screen instructions to finish the initial setup process, including menu language choice, channel scan, network connection, and more.

At each step, either make a choice or skip the step.

Users can manually perform this process at a later time under the **System > Setup** menu.

---

## Switching Between Video Sources

Press the **SOURCE** button to switch between devices connected to the TV.

For example, to switch to a game console connected to the second HDMI connector, press **SOURCE** button. From the **Source** list, select **HDMI2**. The connector names may vary depending on the product.

Select **Tools** button at the upper-right corner of the **Source** screen to access the following functions.

- **Refresh**

Select this if a connected device does not appear in the list. If the list does not show the device after selecting **Refresh**, check the status of the TV-to-device connection.

 This function is only available if Anynet+ (HDMI-CEC) function is set to On.

- **Edit Name**

You can rename devices connected to the TV to more easily identify external sources.

With a computer connected to the TV's HDMI (DVI) port via an HDMI cable, for example, you can change **Edit Name** to **PC**.

With a computer connected to the TV's HDMI (DVI) port via an HDMI-to-DVI cable, for example, you can change **Edit Name** to **DVI PC**.

With an AV device connected to the TV's HDMI (DVI) port via an HDMI-to-DVI cable, for example, you can change **Edit Name** to **DVI Devices**.

- **Information**

View detailed information about the connected devices.

- **Disconnect USB Device**

Remove the USB device from the list to safely. This function is only available when the USB device selected.

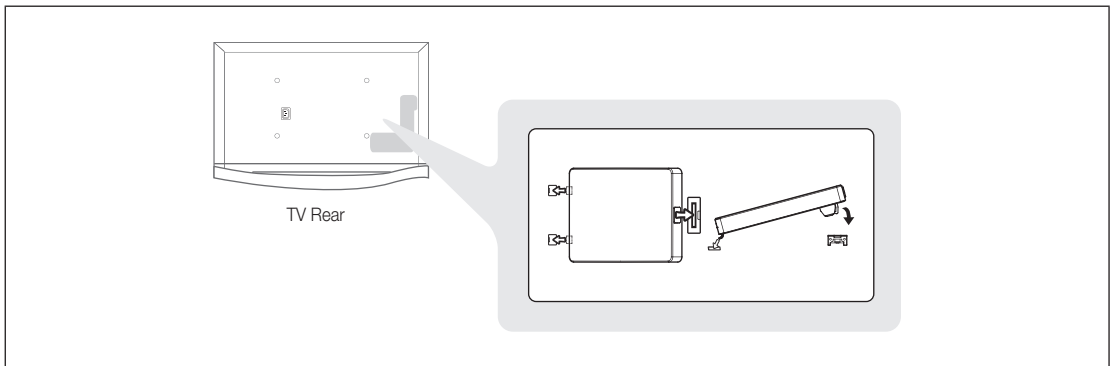
### Universal remote setup

To add a new external device to control it with the Touch Remote Control, press the **SOURCE** button and select **Universal remote setup** on the top right of the screen.


Using the universal remote control, users can control external devices connected to the TV, such as a set-top box, Blu-ray player, and AV receiver.

---

## The Evolution Kit Slot (Kit Sold Separately)



Attaching the Evolution Kit to your Samsung TV upgrades the TV's hardware and software without your needing to purchase a new TV. With the Evolution Kit, you can keep your TV updated with the latest features and services provided by Samsung Electronics.

 The Evolution Kit is sold separately. When users purchase an Evolution Kit released in 2014 or later, the user's TV can be upgraded to match the software version of the Evolution Kit. However, an Evolution Kit may not be available, depending on the product.


---


## Viewing the e-Manual

The embedded e-Manual contains information about your TV's key features.

This TV has a built-in user guide. To read it, use one of the following methods:





- Open the **Support** menu and choose **e-Manual**.
- Press the **MORE** button on the Smart Touch Control to display control buttons on the screen. Click the Touch Pad until **e-Manual** appears and select it.

 Words in blue refer to screen menu options and words in light blue refer to remote control buttons.

 A printable version of this guide is also available at [www.samsung.com/support](http://www.samsung.com/support).

### Scrolling a Page

To scroll a page, use one of the following methods:

- Press the  or  button on the scroll bar at the right edge of the screen.
- Drag or flick up or down the line on either the left or right edge of the touchpad.
- Place the focus on the  or  button at the right edge of the screen, drag or flick up or down on the touchpad.


## Using the Top Icons

Use the **Back**, **Forward**, and **Opened page** icons on the top left of the screen to navigate through pages. These icons are available when two or more pages are passed.



## Returning to the Home Page

To return to the home page, press the  button or select  on the top right of the screen.


## Searching the Index

Press the  button or select  on the top right of the screen to display the index. Select a term to display the page containing the term.


## Searching Pages

Press the  button or select  on the top of the screen to access the search screen. Enter a search phrase and select **Done**. Select an item from the search results list to navigate to the relevant page.

## Closing the e-Manual

To close the e-Manual, press hold the **RETURN** button or select  at the upper-right corner of the screen.

## Jumping to a Menu Item

To directly jump to the menu item that is described in the current section, select . It is possible to jump from a menu item directly to the related section in the e-Manual.

If you want to read an e-manual entry on a specific screen menu feature, press the Virtual Remote panel's or the regular remote's **E-MANUAL** button to load the corresponding e-manual page.

 This feature may not be available, depending on the menu.

## Updating the e-Manual

Press the  button to launch Smart Hub and select **Apps**, and then select **More Apps**. The e-Manual can be updated in the same way with an application update.

On the **More Apps** screen, select **Apps to update**. Select e-Manual from the list. The e-Manual starts updating to the latest version. However, **Apps to update** appears on the screen only when the update is required.

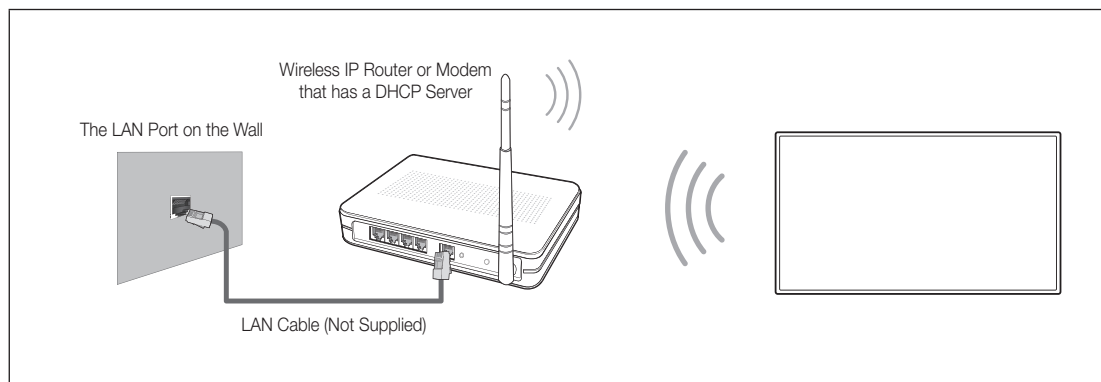
---

# Connecting to a Network

Connecting the Smart TV to a network gives you access to online services such as the Smart Hub, as well as software updates.

## Network Connection - Wireless

Connect the TV to the Internet using a standard router or modem.



## Wireless Network Precautions

- This Smart TV supports the IEEE 802.11a/b/g/n communication protocols. Samsung recommends using IEEE 802.11n. Otherwise when you play video over a network connection, the video may not play smoothly.
- To use a wireless network, the TV must be connected to a wireless router or modem. If the wireless router supports DHCP, the TV can use a DHCP or static IP address to connect to the wireless network.
- Select a channel that is not currently in use for the wireless router. If the channel set for the wireless router is currently being used by another device, the result is usually interference and/or a communications failure.
- Most wireless networks have an optional security system. To enable a wireless network's security system, you need to create a security key using characters and numbers. This security key is then needed to connect to the wireless network.

## Network Security Protocols

The TV only supports the following wireless network security protocols and is unable to connect to non-certified wireless routers:

- Authentication Modes: WEP, WPAPSK, WPA2PSK
- Encryption Types: WEP, TKIP, AES

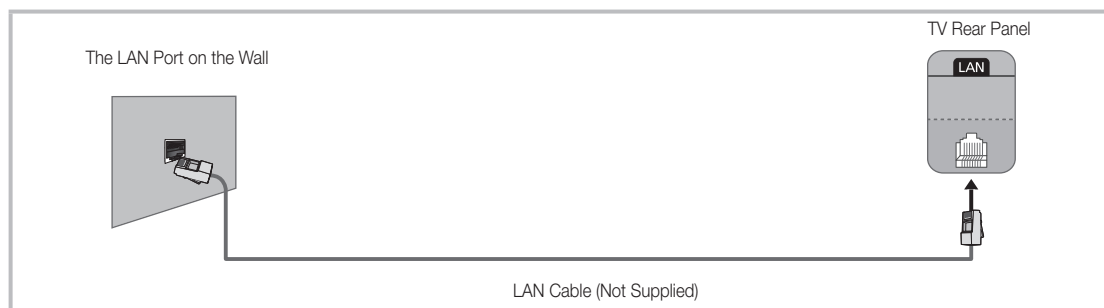
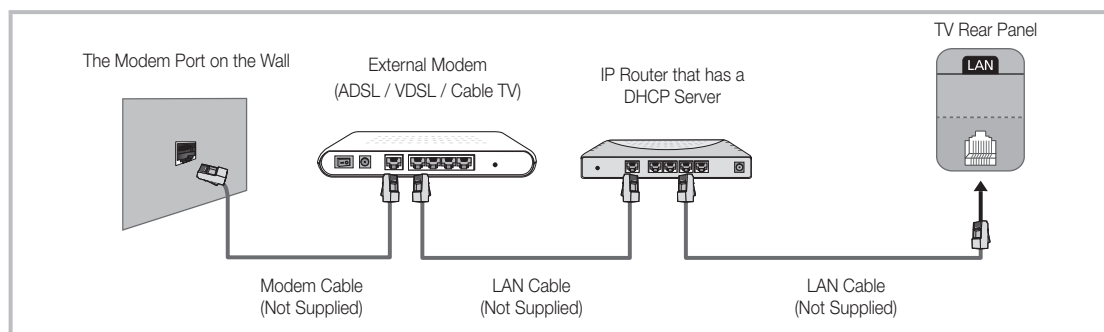
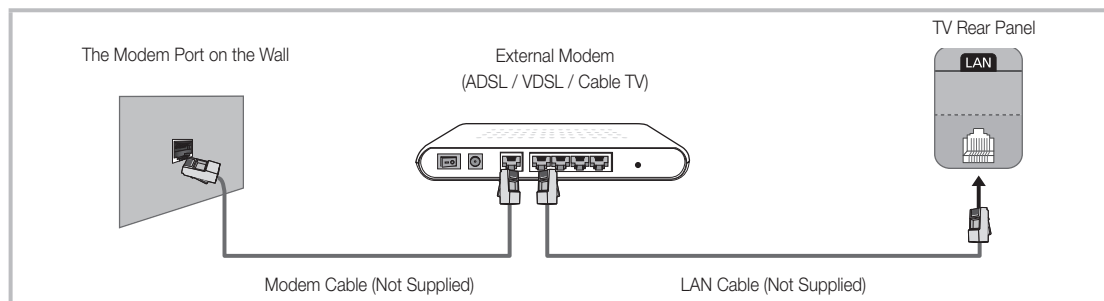
If the wireless router has been set to Pure High-throughput (Greenfield) 802.11n mode and the Encryption Type to WEP or TKIP, Samsung Smart TVs will not support the connection in compliance with the new Wi-Fi certification specifications.

If the wireless router supports WPS (Wi-Fi Protected Setup), it is possible to connect to the network using PBC (Push Button Configuration) or a PIN (Personal Identification Number). WPS automatically configures the SSID and WPA key settings.



## Network Connection - Wired

There are three main ways to connect your TV to your network using cable, depending on your network setup. They are illustrated starting below:



- ✎ The TV does not support network speeds less than or equal to 10Mbps.
- ✎ Use Cat 7 cable for the connection.

---

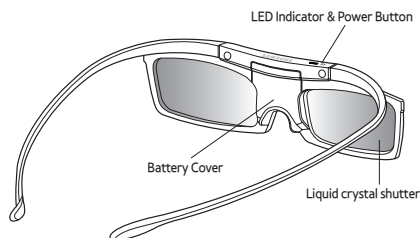
# 3D Active Glasses

## Features

Samsung's SSG-5100GB 3D glasses enable you to view 3D images on your 3D TV. The Samsung 3D glasses communicate with Samsung 3D TVs via the 2.4GHz RF band.

- ✎ The Samsung 3D glasses are only compatible with Samsung D, E, and F series 3D TV's that are released 2011, 2012 and 2013. These 3D glasses cannot be connected to other Bluetooth devices.

## Parts

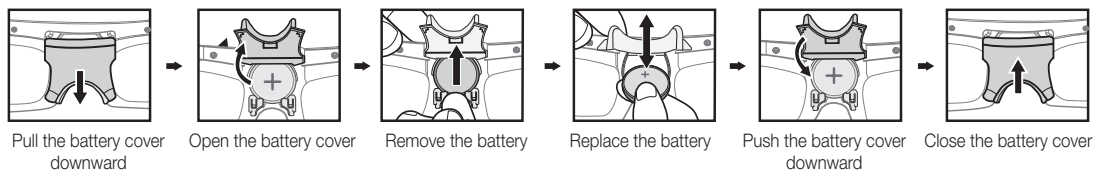


- ✎ For details on how to attach the glasses' temples and how to pair the glasses with the TV, refer to the separate 3D glasses manual.

## Replacing the Battery

If the red LED blinks every two seconds continually, replace the battery with a new one.

- ✎ Insert the "+" side of the battery into the side marked with "+" in the battery compartment.
- ✎ To check the remaining battery capacity, refer to the pairing section in this manual.



## Pairing 3D Active Glasses

- ✎ What is Pairing? Pairing is the process of connecting 3D glasses and a 3D TV so that the two devices can exchange data.
- ✎ Ensure your Samsung TV and 3D glasses are no farther than 19.5 in (50 cm) apart from each other while pairing is in progress.

- **Turning the glasses on**

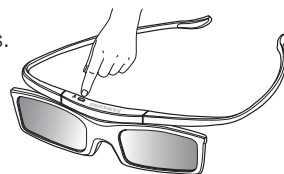
Press the power button briefly. The green LED is turned on for 3 seconds. (Make sure that 3D is activated on the TV before using the 3D glasses.)

- **Turning the glasses off**

Press the power button briefly. The red LED is turned on for 3 seconds.

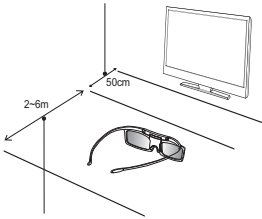
- **Performing the pairing process**

Turn the TV on and let it power up completely. Press and hold the Power button on the glasses. The green and the red LEDs blink alternately for 2 seconds.



- **Operating range**

Recommended pairing distance



Recommended viewing distance

Recommended viewing distance	2~6m (6.5 to 19.5 ft)
Recommended pairing distance	50 cm or less (19.5 in)

- ✎ Once the 3D glasses are paired, the remaining battery capacity is displayed on the TV screen. (This feature only applies to Samsung F series 3D TVs and 3D glasses that have been available since 2013.)
- ✎ If you keep trying to pair the glasses and the TV, the battery level will decrease significantly. However, the battery level will recover to a certain degree in about a minute.
- ✎ The working distance depends on the existence of obstacles (a person, metal, walls, etc.) between the glasses and the TV and the strength of the Bluetooth signal.
- ✎ Turn off the 3D glasses while they are not in use. If you leave the 3D glasses on, the battery lifespan decreases.

### Pairing steps

1. Turn on the TV, and then move the glasses within 19.5 inches of the TV.
2. Press the power button on the 3D glasses briefly. The 3D glasses will power on and pairing will start.
3. The message "3D glasses are connected to TV." will be displayed on the TV screen when the pairing is successfully completed.
  - If pairing fails, the 3D glasses will power off.
  - If the first attempt to pair fails, power the TV off and on again and perform step 2.
  - How to pair again: Press the power button on the 3D glasses for more than 1 second.

### Pairing is needed again in the following situations:

- If the 3D glasses do not function, even when the power button is pressed, especially with a 3D TV after a repair.
- If you want to play 3D content on another Samsung 3D TV model that belongs to the D, E, or F series released in 2011 through 2013. You must pair the glasses with the other TV.

# Watching 3D Video

Some 3D modes may not be available depending on the format of the image source.

To watch in 3D, you must wear 3D Active Glasses and turn the glasses on by pressing the power button.



1. Go to the 3D screen. (**Picture > 3D**)
2. Select the 3D Mode. The 3D Mode screen appears.
3. Set the 3D Mode of the image you want to view.

## Troubleshooting

If you encounter...	Try this...
My 3D glasses do not work.	Replace the battery.
	The 3D glasses should be close to the TV. Make sure that the distance between the TV and your 3D glasses is less than 19.5 feet (6m) in a straight line.
	Check the 3D function settings of your TV.
The LED keeps blinking	The battery is dead. Replace the battery.

## Specifications (Model Number: SSG-5100GB )

Optics	Shutters	Liquid crystal	Transmittance	36±2%
	Recommended operating distance	2 ~ 6m (6.5 to 19.5 ft)	Field Rate	120 fields/second
Weight	Glasses	21.5g/.76 oz. (including the battery: 24.0±0.5g/.85.±.018oz. )		
Power	Glasses	One 3V lithium/manganese dioxide battery 3V(CR2025)		
Power consumption	Glasses	0.85mA (Average)		
	Battery	Type	165mAh, 3.0V (CR2025)	
		Operating time	150 hours	
Operating conditions	Operating temperature	50 °F ~ 104 °F (10°C ~ 40°C)		
	Custody temperature	-4 °F ~ 113 °F (-20°C ~ 45°C)		

-  Product specifications may be changed without notice in order to enhance product performance.
-  The continuous operating time may differ depending on the wireless communication environment and usage conditions.

---

# What is Remote Support?

Samsung Remote Support service offers you one-on-one support with a Samsung Technician who can remotely.

- **Diagnose** your TV
- **Adjust the TV settings** for you
- **Perform a factory reset** your TV
- Install recommended **firmware updates**

## How Does it Work?

Having a Samsung Tech remotely service your TV is really pretty simple



1. **Call Samsung Contact Centre** and ask for remote support.



2. **Open the menu** on your TV and go to the **Support section**.



3. Select Remote Management and **Provide the Pin#** to the agent.





4. The agent will then **access your TV**. That's it!

---

# Troubleshooting

If you have any questions about the TV, first refer to this list. If none of these troubleshooting tips apply, please visit “[www.samsung.com](http://www.samsung.com),” then click on Support, or contact the call centre listed on the back-cover of this manual.

Issues	Solutions and Explanations
The TV won't turn on.	<ul style="list-style-type: none"><li>• Make sure the AC power cord is securely plugged in to the wall outlet and the TV.</li><li>• Make sure the wall outlet is working.</li><li>• Try pressing the  button on the TV to make sure the problem is not the remote. If the TV turns on, refer to “Remote control does not work” below.</li></ul>
There is no picture/video.	<ul style="list-style-type: none"><li>• Check the cable connections. Remove and reconnect all cables connected to the TV and external devices.</li><li>• Set the video outputs of your external devices (Cable/Sat Box, DVD, Blu-ray etc) to match the TV's input connections. For example, if an external device's output is HDMI, it should be connected to an HDMI input on the TV.</li><li>• Make sure your connected devices are powered on.</li><li>• Be sure to select the correct input source.</li><li>• Reboot the connected device by unplugging it, and then reconnecting the device's power cable.</li></ul>
The remote control does not work.	<ul style="list-style-type: none"><li>• Replace the remote control batteries. Make sure the batteries are installed with their poles (+/-) in the correct direction.</li><li>• Clean the sensor's transmission window on the remote.</li><li>• Try pointing the remote directly at the TV from 5–6 feet away.</li></ul>
The cable/set top box remote control doesn't turn the TV on or off or adjust the volume.	<ul style="list-style-type: none"><li>• Programme the Cable/Set remote control to operate the TV. Refer to the Cable/Set-Top-Box user manual for the SAMSUNG TV code.</li></ul>

 To keep your TV in optimum condition, upgrade to the latest firmware on the Samsung web site by USB (Samsung.com > Support > Downloads).

 Some of above pictures and functions are available at specific models only.

---

## Mounting the TV on the Wall Using the Wall Mount Kit (Optional)



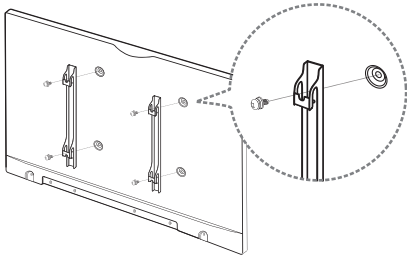
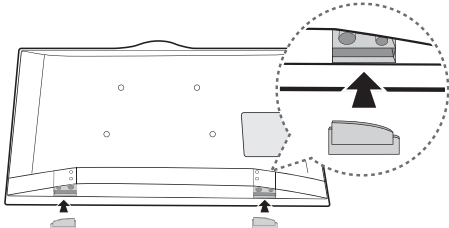
### Wall or Ceiling Mounting

If you mount this product on a wall, it should be mounted only as recommended by the manufacturer. Unless it is correctly mounted, the product may slide or fall, causing serious injury to a child or adult, and serious damage to the product.


### Installing the Wall Mount Kit

The wall mount kit (sold separately) lets you mount the TV on the wall.

For detailed information about installing the wall mount, see the instructions provided with the wall mount. We recommend you contact a technician for assistance when installing the wall mount bracket. We do not advise you to do it yourself. Samsung Electronics is not responsible for any damage to the product or injury to yourself or others if you select to install the wall mount on your own.

Installing a Wall Mount	Attaching the Blanking Bracket
	 Blanking Bracket
For more detailed information, refer to the User Manual of the Wall Mount Kit when you purchase.	When installing the TV onto a wall, attach the Blanking Bracket as shown.

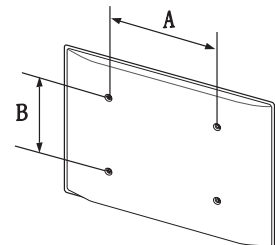
### Wall Mount Kit Specifications (VESA)

 The wall mount kit is not supplied, but sold separately. Install your wall mount on a solid wall perpendicular to the floor. When attaching to other building materials, please contact your nearest dealer. If installed on a ceiling or slanted wall, it may fall and result in severe personal injury.

#### NOTE

- Standard dimensions for wall mount kits are shown in the table below.
- When purchasing our wall mount kit, a detailed installation manual and all parts necessary for assembly are provided.
- Do not use screws that do not comply with the VESA standard screw specifications.
- Do not use screws that are longer than the standard dimension or do not comply with the VESA standard screw specifications. Screws that are too long may cause damage to the inside of the TV set.
- For wall mounts that do not comply with the VESA standard screw specifications, the length of the screws may differ depending on the wall mount specifications.
- Do not fasten the screws that are too strongly; this may damage the product or cause the product to fall, leading to personal injury. Samsung is not liable for these kinds of accidents.
- Samsung is not liable for product damage or personal injury when a non-VESA or non-specified wall mount is used or the consumer fails to follow the product installation instructions.
- Do not mount the TV at more than a 15 degree tilt.
- Always have two people mount the TV on to a wall.

Product Family	Model	VESA Spec.(A x B)	Standard Screw	Quantity
PDP TV [Slim type]	PS51F8500AR	400 X 400	M8	4
	PS60F8500AR PS64F8500AR	600 X 400		



Do not install your Wall Mount Kit while your TV is turned on. It may result in personal injury due to electric shock.

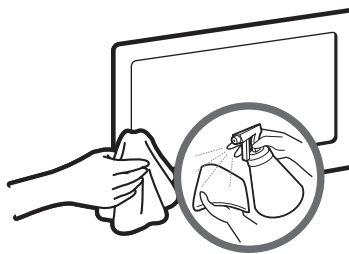
---

## Storage and Maintenance

- ✎ If a sticker was attached to the TV screen, some debris can remain after you remove the sticker. Please clean the debris off before watching TV.
- ✎ The exterior and screen of the product can get scratched during cleaning. Be sure to wipe the exterior and screen carefully using the cloth provided or a soft cloth to prevent scratches.



Do not spray water directly onto the product. Any liquid that goes into the product may cause a failure, fire, or electric shock.



Clean the product with a soft cloth dampened with a small amount of water. Do not use a flammable liquid (e.g. benzene, thinners) or a cleaning agent.

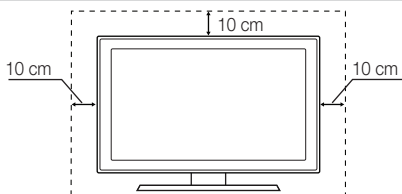
---

## Providing Proper Ventilation for Your TV

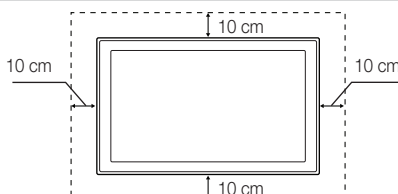
When you install your TV, maintain a distance of at least 10 cm between the TV and other objects (walls, cabinet sides, etc.) to ensure proper ventilation. Failing to maintain proper ventilation may result in a fire or a problem with the product caused by an increase in its internal temperature.

- ✎ Whether you install your TV using a stand or a wall-mount, we strongly recommend you use parts provided by Samsung Electronics only.
  - If you use parts provided by another manufacturer, it may cause difficulties with the product or result in injury caused by the product falling.

Installation with a stand.



Installation with a wall-mount.



### Other Warnings

- ✎ The actual appearance of the TV may differ from the images in this manual, depending on the model.
- ✎ Be careful when you touch the TV. Some parts can be somewhat hot.

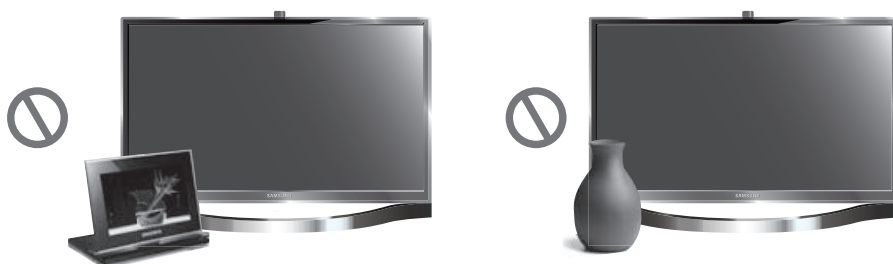


---

## Eco Sensor and Screen Brightness



Eco Sensor measures the light in your room and optimizes the brightness of the TV automatically to reduce power consumption. This causes the TV to brighten and dim automatically. If you want to turn this function off, go to **Menu > System > Eco Solution > Eco Sensor**



**Do not block the sensor with any material. It can decrease picture brightness.**

1. **Eco Sensor:** This power-saving feature automatically adjusts the screen brightness of the TV according to the ambient light intensity detected by the Light Sensor.
2. To enable or disable **Eco Sensor**, go to **System > Eco Solution > Eco Sensor** and select **On** or **Off**.
3. Precaution: If you find the screen too dark while watching the TV in a dark area, this may be caused by the **Eco Sensor**.

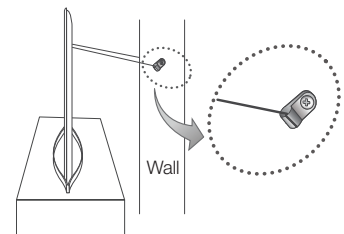
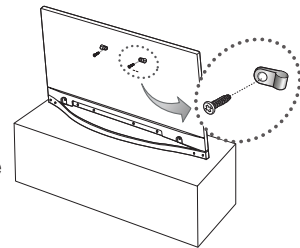
## Tip Prevention – Securing the TV to the Wall



**Caution:** Pulling, pushing, or climbing on the TV may cause the TV to fall. In particular, ensure your children do not hang on or destabilize the TV. Doing so may cause the TV to tip over, causing serious injuries or death. Follow all safety precautions provided in the Safety Flyer included with your TV. For added stability and safety, you can purchase and install the anti-fall device as described below.




### To Avoid the TV from Falling

1. Put the screws into the clamps and firmly fasten them onto the wall. Confirm that the screws have been firmly installed onto the wall.
  - 🔧 You may need additional material such as an anchor depending on the type of wall.
  - 🔧 Since the necessary clamps, screws, and string are not supplied, please purchase these additionally.
2. Remove the screws from the back centre of the TV, put the screws into the clamps, and then fasten the screws onto the TV again.
  - 🔧 Screws may not be supplied with the product. In this case, please purchase the screws of the following specifications.
  - 🔧 Screw Specifications
    - For PS51F8500AR PS60F8500AR PS64F8500AR: M8
3. Connect the clamps fixed onto the TV and the clamps fixed onto the wall with a strong cable and then tie the string tightly.
  - 🔧 **NOTE**
    - Install the TV near to the wall so that it does not fall backwards.
    - It is safe to connect the string so that the clamps fixed on the wall are equal to or lower than the clamps fixed on the TV.
    - Untie the string before moving the TV.
4. Verify all connections are properly secured. Periodically check the connections for any sign of fatigue or failure. If you have any doubt about the security of your connections, contact a professional installer.



# Specifications - TV

Environmental Considerations			
Operating Temperature	10°C to 40°C (50°F to 104°F)		
Operating Humidity	10% to 80%, non-condensing		
Storage Temperature	-20°C to 45°C (-4°F to 113°F)		
Storage Humidity	5% to 95%, non-condensing		
Stand Swivel (Left / Right)	0°		
Model Name	PS51F8500	PS60F8500	PS64F8500
Screen Size (Diagonal)	129 cm	152 cm	163 cm
Sound (Output)	10W x 2		
Dimensions (W x H x D)			
Body	119.0 x 71.1 x 5.5 cm	139.2 x 83.1 x 5.5 cm	148.2 x 88.0 x 5.5 cm
With stand	119.0 x 74.6 x 27.0 cm	139.2 x 87.2 x 30.0 cm	148.2 x 92.2 x 32.0 cm
Weight			
Without Stand	20.9 Kg	29.2 Kg	32.8 Kg
With Stand	23.4 Kg	32.4 Kg	36.2 Kg
Display Resolution	1920 x 1080	1920 x 1080 (Black & White)	1920 x 1080




-  Design and specifications are subject to change without prior notice.
-  For information about the power supply, and more about power consumption, refer to the label attached to the product.
-  The actual appearance of the TV may differ from the images in this manual, depending on the model.



## Standby mode

To decrease power consumption unplug the power cord when you don't use the TV for a long time.

Licences



 <b>Approved by PTA (2013)</b> Model : SSG-5100GB	<b>BTA</b> <b>REGISTERED No. :</b> <b>BTA/TA/2012/385</b>
 <b>NTC TAC</b> No.: ESD-XXXXXXX	<b>OMAN-TRA</b> <b>TRA/TA-R/XXXX/YY</b> <b>D100086</b>
<b>AGREE PAR L'ANRT Mauritanie</b> Numéro d'agrément : 0099/ARE/2012 Date d'agrément : 02/12/2012	 <b>TA-2012/1903</b> <b>APPROVED</b>
<b>TRA</b> <b>REGISTERED No. : ER0101541/13</b> <b>DEALER No. : 0016333/08</b>	<b>ZMB/ZICTA/TA/</b> <b>2013/1/1</b>
<b>Approval No : 18ETA12</b> <b>Model : SSG-5100GB</b>	<b>28453/</b> <b>SDPPI/2013</b> <b>1258</b>

 <b>Approved by PTA (2013)</b> Model : RMCTPF	<b>AGREE PAR L'ANRT Mauritanie</b> Numéro d'agrément : 0109/ARE/2013 Date d'agrément : 28/01/2013
 <b>TA-2012/1902</b> <b>APPROVED</b>	

## User Instructions

- **Screen Image retention**

Do not display a still image (such as on a video game) including the some small fixed logo on the plasma display panel for more than several minutes as it can cause screen image retention. This image retention is also known as “screen burn”. To avoid such image retention, reduce the degree of brightness and contrast of the screen when displaying a still image.

- **Heat on the top of the Plasma TV**

The top side of the product may be hot after long periods of use as heat dissipates from the panel through the vent hole in the upper part of the product.

This is normal and does not indicate any defect or operation failure of the product.

However, children should be prevented from touching the upper part of the product.

- **The product is making a “cracking” noise.**

A “cracking” noise may occur when the product contracts or expands due to a change in the surrounding environment such as temperature or humidity. This is normal and not a defect of the unit.

- **Cell Defects**

The PDP uses a panel consisting of 2,360,000(HD-level) to 6,221,000(FHD-level) pixels which require sophisticated technology to produce. However, there may be a few bright or dark pixels on the screen. These pixels will have no impact on the performance of the product.

- **Avoid operating the TV at temperatures below 41°F (5°C)**

- **A still image displayed too long may cause permanent damage to the PDP Panel.**



Watching the Plasma TV in 4:3 format for a long period of time may leave traces of borders displayed on the left, right and centre of the screen caused by the difference of light emission on the screen. Playing a DVD or a game console may cause similar effects to the screen.

Damages caused by the above effect are not covered by the Warranty.

- **After-images on the Screen.**

Displaying still images from Video games and PC for longer than a certain period of time may produce partial after-images. To prevent this effect, reduce the “brightness” and “contrast” when displaying still images for a long time.

- **Warranty**

Warranty does not cover any damage caused by image retention.

Burn-in is not covered by the warranty.

- **Caution**



The glass screen of your PDP TV can break if you accidentally drop the TV. Handle the TV with care. When moving the TV, always have two or more people pick it up and carry it as a safety precaution. Do not lay the TV flat on its face or back.

Your Samsung Plasma TV is a high quality television that has been carefully packaged to protect the integrity of its glass panel and component parts during shipment. It is, nonetheless, a fragile piece of electronics that requires careful handling. Refrain from putting undue stress on any part of the packaging when shipping or unpacking the TV. Use care when installing the TV. Avoid placing the TV in a location where it may be struck, exposed to sharp impacts, or fall. Panel breakage caused by a fall or impact strike is not covered under the manufacturer's warranty.